

2023

PRODUCT CATALOGUE

clean water  
clean future



**AF**  
**AsiaFilt** | Irrigation and  
Filter Systems

[www.asiafilt.com.tr](http://www.asiafilt.com.tr)





## Filter Systems

*That Increase Efficiency*



Clean Water  
Clean Future





## EXPERIENCE IS EVERYTHING

AsiaFilt has started its manufacturing of filtration and irrigation System with more than 25 years of experience in the production of irrigation systems.

Thanks to its experienced engineers and R&D activities, many new modern systems have been developed. In this way, customer satisfaction is ensured by putting them at the service of consumers. Our company, which continues to invest in R&D in order to offer better and safer products to customers, will continue its customer-oriented Services with increasing success in the future with its dynamic staff, strong brand and structure.

Our founders, who branded their mastery experiences and marketing strategies that make difficult work easier under the name of Asiafilt Irrigation and Filtration Systems, maintain their domestic and national production Vision in research and new product development. For our 2023 global market targets, we continue our mission of clean water, clean future, with domestic and International fair participation, special Solutions for farmers and dealers.

Clean water  
Clean future



## INDEX

<b>AF</b>   Bright Flush Automatic Filter	6
<b>AF</b>   Hydrocyclone And Sand Separator Systems	7-12
<b>AF</b>   Metal Filters With Manifolds And Legs	13
<b>AF</b>   Sand Media Filter Systems (Gravel Tank)	14-17
<b>AF</b>   Fertilization Tank Systems	18
<b>AF</b>   Plastic Disc Filters	19
<b>AF</b>   Mobile Platforms And Hydraulic Lift	20
<b>AF</b>   Automation Units, Clamps, Manometers and Valves	21





Bright Flush



Product Code	Inlet/Outlet (inch)	Flowrate(m3/h)
BF-406	4"	95
BF-409	4"	110
BF-506	5"	120
BF-509	5"	135
BF-606	6"	160
BF-609	6"	185

Bright Flush with Hydrocyclone



Product Code	Inlet/Outlet (inch)	Flowrate(m3/h)
BFH-406	4"	95
BFH-409	4"	110
BFH-506	5"	120
BFH-509	5"	135
BFH-606	6"	160
BFH-609	6"	185

Bright Flush with Graver Systems



Product Code	Inlet/Outlet (inch)	Flowrate(m3/h) Min.-Max.	Bright Flush	Graver Filter Units and Size
BFY-462	4" Coupling	50-80	BF-406	2 Units 24"
BFY-592	5" Flange	80-90	BF-506	2 Units 36"
BFY-563	5" Flange	90-110	BF-506	3 Units 24"
BFY-663	6" Flange	100-120	BF-606	3 Units 24"
BFY-664	6" Flange	130-160	BF-606	4 Units 24"
BFY-693	6" Flange	120-140	BF-606	3 Units 36"
BFY-694	6" Flange	140-190	BF-606	4 Units 36"



### Hydrocyclone

Product Code	Inlet/Outlet (inch)	Flowrate(m3/h) Min.-Max.
H-100	1" Coupling	3-7
H-150	1 1/2" Coupling	7-11
H-200	2" Coupling	10-20
H-250	2 1/2" Coupling	19-29
H-300	3" Coupling	29-44
H-400	4" Coupling	54-84
H-500	5" Flange-Coupling	100-130
H-600	6" Flange-Coupling	130-180
H-800	2*5" Flange	200-320



### Sand Separator Systems

Product Code	Inlet/Outlet (inch)	Flowrate(m3/h) Min.-Max.
S-150	1 1/2" Coupling	3-7
S-200	2" Coupling	10-20
S-300	3" Coupling	30-45
S-400	4" Coupling	55-85
S-500	5" Flange-Coupling	100-130
S-600	6" Flange-Coupling	130-170
S-800	2*5" Flange	200-320





Front-System SepClean



Product Code	Inlet/Outlet (inch)	Flowrate(m3/h) Min.-Max.
SPC-300	3" Coupling	30-45
SPC-400	4" Coupling	50-85
SPC-500	5" Flange-Coupling	100-130
SPC-600	6" Flange-Coupling	130-180
SPC-800	2*5" Flange	200-320

Front-System Hydrocyclone



Product Code	Inlet/Outlet (inch)	Flowrate(m3/h) Min.-Max.
SH-200	2" Coupling	10-20
SH-300	3" Coupling	30-45
SH-400	4" Coupling	55-85
SH-500	5" Flange-Coupling	100-130
SH-600	6" Flange-Coupling	130-180
SH-800	2*5" Flange	200-320

Front-System Sand Separator



Product Code	Inlet/Outlet (inch)	Flowrate(m3/h) Min.-Max.
SS-200	2" Coupling	10-20
SS-300	3" Coupling	30-45
SS-400	4" Coupling	50-85
SS-500	5" Flange-Coupling	100-130
SS-600	6" Flange-Coupling	130-170
SS-800	2*5" Flange	200-320





### Hydrocyclones with Metal Disc Filters

Product Code	Inlet/Outlet (inch)	Flowrate(m <sup>3</sup> /h) Min.-Max.
MH-200	2" Coupling	10-20
MH-250	2 1/2" Coupling	20-30
MH-300	3" Coupling	30-45
MH-400	4" Coupling	50-60



### Hydrocyclones with Plastic Disc Filters

Product Code	Inlet/Outlet (inch)	Flowrate(m <sup>3</sup> /h) Min.-Max.
PH-200	2" Coupling with single disc filter	10-20
PH-250	2 1/2" Coupling with single disc filter	20-30
PH-300	3" Coupling with single disc filter	30-40
PHD-300	3" Coupling with double disc filter	30-45
PHD-400	4" Coupling with double disc filter	50-80



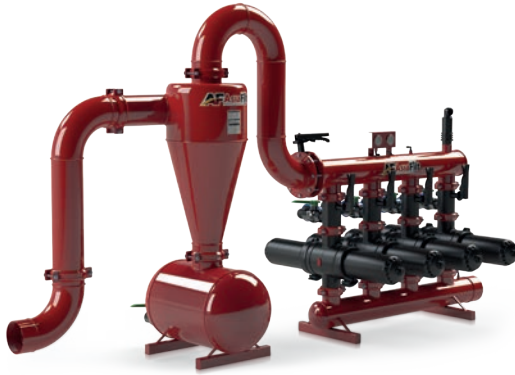
### Sand Separator with Plastic Disc Filters

Product Code	Inlet/Outlet (inch)	Flowrate(m <sup>3</sup> /h) Min.-Max.
PS-200	2" Coupling	10-20
PS-250	2 1/2" Coupling	20-30
PS-300	3" Coupling	30-40
PSD-300	3" Coupling Double Filter	30-45
PSD-400	4" Coupling Double Filter	50-80





Semi-automatic / with Double Plastic Disc Filters and Hydrocyclone Systems



Product Code	Inlet/Outlet (inch)	Flowrate(m3/h) Min.-Max.
PHD-423	4" Coupling 2*3" Plastic	50-85
PHD-534	5" Coupling 3*4" Plastic	100-135
PHD-634	6" Coupling 3*4" Plastic	130-160
PHD-644	6" Coupling 4*4" Plastic	135-180
PHD-654	6" Coupling 5*4" Plastic	135-190
PHD-854	8" Flange 4*4" Plastic	190-270

Semi-automatic / with Double Plastic Disc Filters and Sand Separator Systems



Product Code	Inlet/Outlet (inch)	Flowrate(m3/h) Min.-Max.
PSD-423	4" Coupling 2*3" Flange	55-80
PSD-534	5" Coupling 3*4" Plastic	100-130
PSD-634	6" Coupling 3*4" Plastic	130-160
PSD-644	6" Coupling 4*4" Plastic	135-180
PSD-654	6" Coupling 5*4" Plastic	135-190
PSD-854	2*5" Flange 5*4" Plastic	190-285

Semi-automatic / with Double Plastic Disc Filters and SepClean Systems



Product Code	Inlet/Outlet (inch)	Flowrate(m3/h) Min.-Max.
SPC-423	4" Coupling 2*3" Flange	55-80
SPC-534	5" Coupling 3*4" Plastic	100-130
SPC-634	6" Coupling 3*4" Plastic	130-160
SPC-644	6" Coupling 4*4" Plastic	135-180
SPC-654	6" Coupling 5*4" Plastic	135-190
SPC-854	2*5" Flange 5*4" Plastic	190-285





Full-automatic / with Double Plastic  
Disc Filters and Hydrocyclone

Product Code	Inlet/Outlet (inch)	Flowrate(m3/h) Min.-Max.
PHDO-423	4" Coupling 2*3" Plastic	50-85
PHDO-534	5" Coupling 3*4" Plastic	100-135
PHDO-634	6" Coupling 3*4" Plastic	130-160
PHDO-644	6" Coupling 4*4" Plastic	135-180
PHDO-654	6" Coupling 5*4" Plastic	135-190
PHDO-854	8" Flange 4*4" Plastic	190-270



Full-automatic / with Double Plastic  
Disc Filters and Sand Separator

Product Code	Inlet/Outlet (inch)	Flowrate(m3/h) Min.-Max.
PSDO-423	4" Coupling 2*3" Flange	55-80
PSDO-534	5" Coupling 3*4" Plastic	100-130
PSDO-634	6" Coupling 3*4" Plastic	130-160
PSDO-644	6" Coupling 4*4" Plastic	135-180
PSDO-654	6" Coupling 5*4" Plastic	135-190
PSDO-854	2*5" Flange 5*4" Plastic	190-285



Full-automatic / with Double Plastic  
Disc Filters and SepClean System

Product Code	Inlet/Outlet (inch)	Flowrate(m3/h) Min.-Max.
SPCO-423	4" Coupling 2*3" Flange	55-80
SPCO-534	5" Coupling 3*4" Plastic	100-130
SPCO-634	6" Coupling 3*4" Plastic	130-160
SPCO-644	6" Coupling 4*4" Plastic	135-180
SPCO-654	6" Coupling 5*4" Plastic	135-190
SPCO-854	2*5" Flange 5*4" Plastic	190-285



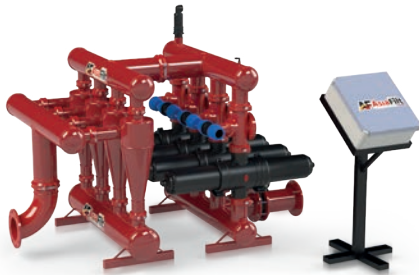


**Semi-automatic / Multiple Metal and Plastic Hydrocyclone Systems**



Product Code	Inlet/Outlet (inch)	Flowrate(m3/h) Min.-Max.
HC-423	4" Coupling 2*3" Plastic	50-85
HC-534	5" Coupling 3*4" Plastic	100-135
HC-634	6" Coupling 3*4" Plastic	135-160
HC-644	6" Coupling 4*4" Plastic	130-180
HC-654	6" Coupling 5*4" Plastic	135-190

**Full-automatic / Multiple Metal and Plastic Hydrocyclone Systems**



Product Code	Inlet/Outlet (inch)	Flowrate(m3/h) Min.-Max.
HCO-423	4" Coupling 2*3" Plastic	50-85
HCO-534	5" Coupling 3*4" Plastic	100-135
HCO-634	6" Coupling 3*4" Plastic	135-160
HCO-644	6" Coupling 4*4" Plastic	130-180
HCO-654	6" Coupling 5*4" Plastic	135-190

**Semi-automatic / Multiple Plastic Hydrocyclone Systems**



Product Code	Inlet/Outlet (inch)	Flowrate(m3/h) Min.-Max.
HCP-423	4" Coupling 2*3" Plastic	50-85
HCP-534	5" Coupling 3*4" Plastic	100-135
HCP-634	6" Coupling 3*4" Plastic	135-160
HCP-644	6" Coupling 4*4" Plastic	130-180
HCP-654	6" Coupling 5*4" Plastic	135-190

**Full-automatic / Multiple Plastic Hydrocyclone Systems**



Product Code	Inlet/Outlet (inch)	Flowrate(m3/h) Min.-Max.
HCPO-423	4" Coupling 2*3" Plastic	50-85
HCPO-534	5" Coupling 3*4" Plastic	100-135
HCPO-634	6" Coupling 3*4" Plastic	135-160
HCPO-644	6" Coupling 4*4" Plastic	130-180
HCPO-654	6" Coupling 5*4" Plastic	135-190





### Semi-Automatic Manifold System

Product Code	Inlet/Outlet (inch)	Flowrate(m3/h) Min.-Max.
MN-423	4" Coupling 2*3" Plastic	50-85
MN-534	5" Coupling 3*4" Plastic	100-130
MN-634	6" Coupling 3*4" Plastic	135-160
MN-644	6" Flange 4*4" Plastic	135-180
MN-654	6" Flange 5*4" Plastic	135-190
MN-854	8" Flange 5*4" Plastic	185-290



### Full-Automatic Manifold System

Product Code	Inlet/Outlet (inch)	Flowrate(m3/h) Min.-Max.
MNO-423	4" Coupling 2*3" Plastic	50-85
MNO-534	5" Coupling 3*4" Plastic	100-130
MNO-634	6" Coupling 3*4" Plastic	135-160
MNO-644	6" Flange 4*4" Plastic	135-180
MNO-654	6" Flange 5*4" Plastic	135-190
MNO-854	8" Flange 5*4" Plastic	185-290



### Metal Disc Filters with Legs

Product Code	Inlet/Outlet (inch)	Dimensions	Flowrate(m3/h) Min.-Max.
AF-225	2" Coupling	25cm	20
AF-253	2 1/2" Coupling	30cm	30
AF-340	3" Coupling	40cm	40
AF-350	3" Coupling	50cm	50
AF-450	4" Coupling	50cm	60



### Metal Disc Filter With Legs and Fertilizer

Product Code	Inlet/Outlet (inch)	Dimensions	Flowrate(m3/h) Min.-Max.
AFG-253	2 1/2" Coupling	35cm	30
AFG-340	3" Coupling	40cm	40
AFG-350	3" Coupling	50cm	50
AFG-450	4" Coupling	50cm	60





Single Type / Sand Media Filters



Product Code	Inlet/Outlet (inch)	Body Size (inch/cm)	Flowrate(m3/h) Min.-Max.
SG-218	2" / DN50	18" / 45cm	8-18
SG-318	3" / DN80	18" / 45cm	9-18
SG-224	2" / DN50	24" / 60cm	15-27
SG-324	3" / DN80	24" / 60cm	15-30
SG-424	4" / DN100	24" / 60cm	20-50
SG-336	3" / DN80	36" / 90cm	31-64
SG-436	4" / DN100	36" / 90cm	32-65

By-pass type/ Sand Media Filter System with Plastic Disc Filter



Product Code	Inlet/Outlet (inch)	Body Size (inch/cm)	Flowrate(m3/h) Min.-Max.
BG-218	2" / DN50	18" / 45cm	8-18
BG-324	3" / DN80	24" / 60cm	18-40
BG-424	4" / DN100	24" / 60cm	20-50
BG-336	3" / DN80	36" / 90cm	32-50
BG-436	4" / DN100	36" / 90cm	33-59





Semi-Automatic/ Sand Media Filters  
System with Plastic Disc Filters

Product Code	Inlet/Outlet (inch)	Gravel Filter Units and Size	Disc Filter Units and Code	Flowrate(m3/h) Min.-Max.
PFG-342	3" Coupling	2 Units 18"	2 Units PF-20	20-40
PFG-462	4" Coupling	2 Units 24"	2 Units PF-30	40-80
PFG-592	5" Flange	2 Units 36"	2 Units PFD-40	70-90
PFG-692	6" Flange	2 Units 36"	2 Units PFD-40	70-100
PFG-563	5" Flange	3 Units 24"	3 Units PFD-30	70-105
PFG-663	6" Flange	3 Units 24"	3 Units PFD-30	70-120
PFG-593	5" Flange	3 Units 36"	3 Units PFD-40	100-125
PFG-693	6" Flange	3 Units 36"	3 Units PFD-40	110-140
PFG-664	6" Flange	4 Units 24"	4 Units PFD-30	115-155
PFG-694	6" Flange	4 Units 36"	4 Units PFD-40	140-185
PFG-895	8" Flange	5 Units 36"	5 Units PFD-40	170-275



Full-Automatic/ Sand Media Filters  
System with Plastic Disc Filters

Product Code	Inlet/Outlet (inch)	Gravel Filter Units and Size	Disc Filter Units and Code	Flowrate(m3/h) Min.-Max.
PFGO-462	4" Coupling	2 Units 24"	2 Units PF-30	40-80
PFGO-592	5" Flange	2 Units 36"	2 Units PFD-40	70-90
PFGO-692	6" Flange	2 Units 36"	2 Units PFD-40	70-100
PFGO-563	5" Flange	3 Units 24"	3 Units PFD-30	70-105
PFGO-663	6" Flange	3 Units 24"	3 Units PFD-30	70-120
PFGO-593	5" Flange	3 Units 36"	3 Units PFD-40	100-125
PFGO-693	6" Flange	3 Units 36"	3 Units PFD-40	110-140
PFGO-664	6" Flange	4 Units 24"	4 Units PFD-30	115-155
PFGO-694	6" Flange	4 Units 36"	4 Units PFD-40	140-185
PFGO-895	8" Flange	5 Units 36"	5 Units PFD-40	170-275





Semi-Automatic/ Sand Media Filters System with Hydrocyclone and Plastic Disc Filters



Product Code	Inlet/Outlet (inch)	Gravel Filter Units and Size	Disc Filter Units and Code	Flowrate(m3/h) Min.-Max.
HPG-342	3" Coupling	2 Units 18"	2 Units PF-20	20-35
HPG-462	4" Coupling	2 Units 24"	2 Units PF-30	50-80
HPG-592	5" Flange	2 Units 36"	2 Units PFD-40	85-95
HPG-563	5" Flange	3 Units 24"	3 Units PF-30	90-105
HPG-663	6" Flange	3 Units 24"	3 Units PFD-30	105-125
HPG-593	5" Flange	3 Units 36"	3 Units PFD-40	100-125
HPG-693	6" Flange	3 Units 36"	3 Units PFD-40	115-135
HPG-664	6" Flange	4 Units 24"	4 Units PFD-30	130-160
HPG-694	6" Flange	4 Units 36"	4 Units PFD-40	140-185
HPG-895	8" Flange	5 Units 36"	5 Units PFD-40	190-220

Full-Automatic/ Sand Media Filters System with Hydrocyclone and Plastic Disc Filters



Product Code	Inlet/Outlet (inch)	Gravel Filter Units and Size	Disc Filter Units and Code	Flowrate(m3/h) Min.-Max.
HPGO-462	4" Coupling	2 Units 24"	2 Units PF-30	50-80
HPGO-592	5" Flange	2 Units 36"	2 Units PFD-40	85-95
HPGO-563	5" Flange	3 Units 24"	3 Units PF-30	90-105
HPGO-663	6" Flange	3 Units 24"	3 Units PFD-30	105-125
HPGO-593	5" Flange	3 Units 36"	3 Units PFD-40	100-125
HPGO-693	6" Flange	3 Units 36"	3 Units PFD-40	115-135
HPGO-664	6" Flange	4 Units 24"	4 Units PFD-30	130-160
HPGO-694	6" Flange	4 Units 36"	4 Units PFD-40	140-185
HPGO-895	8" Flange	5 Units 36"	5 Units PFD-40	190-220



### Semi-Automatic/ Sand Media Filters System with Sand Separator and Plastic Disc Filters

Product Code	Inlet/Outlet (inch)	Gravel Filter Units and Size	Disc Filter Units and Code	Flowrate(m3/h) Min.-Max.
SPG-342	3" Coupling	2 Units 18"	2 Units PF-20	25-45
SPG-462	4" Coupling	2 Units 24"	2 Units PFD-30	55-85
SPG-592	5" Flange	2 Units 36"	2 Units PFD-40	85-95
SPG-563	5" Flange	3 Units 24"	3 Units PFD-30	90-105
SPG-663	6" Flange	3 Units 24"	3 Units PFD-30	105-125
SPG-593	5" Flange	3 Units 36"	3 Units PFD-40	105-130
SPG-693	6" Flange	3 Units 36"	3 Units PFD-40	120-140
SPG-664	6" Flange	4 Units 24"	4 Units PFD-30	130-160
SPG-694	6" Flange	4 Units 36"	4 Units PFD-40	145-185
SPG-895	8" Flange	5 Units 36"	5 Units PFD-40	200-290



### Full-Automatic/ Sand Media Filters System with Sand Separator and Plastic Disc Filters

Product Code	Inlet/Outlet (inch)	Gravel Filter Units and Size	Disc Filter Units and Code	Flowrate(m3/h) Min.-Max.
SPGO-462	4" Coupling	2 Units 24"	2 Units PFD-30	55-85
SPGO-592	5" Flange	2 Units 36"	2 Units PFD-40	85-95
SPGO-563	5" Flange	3 Units 24"	3 Units PFD-30	90-105
SPGO-663	6" Flange	3 Units 24"	3 Units PFD-30	105-125
SPGO-593	5" Flange	3 Units 36"	3 Units PFD-40	105-130
SPGO-693	6" Flange	3 Units 36"	3 Units PFD-40	120-140
SPGO-664	6" Flange	4 Units 24"	4 Units PFD-30	130-160
SPGO-694	6" Flange	4 Units 36"	4 Units PFD-40	145-185
SPGO-895	8" Flange	5 Units 36"	5 Units PFD-40	200-290







Vertical type/ Fertilizer Tank



Product Code	Connection	Capacity (Liter)
DGT-60	1"	60
DGT-100	1"	120
DGT-200	1"	220

Horizontal type/ Fertilizer Tank



Product Code	Connection	Capacity (Liter)
YGT-100	1"	120
YGT-200	1"	220
YGT-300	1"	300
YGT-400	1"	400
YGT-500	1"	500

Set type/ Fertilizer Tank Set with Filter



Product Code	Connection	Capacity (Liter)
SGT-100	4" Coupling	120
SGT-205	5" Coupling	220
SGT-206	6" Coupling	220
SGT-305	5" Coupling	300
SGT-306	6" Coupling	300
SGT-406	6" Coupling	400
SGT-506	6" Coupling	500



Single Plastic Disc Filters



Product Code	Inlet/Outlet (inch)	Flowrate (m <sup>3</sup> /h) max
PF-20	2"	30
PF-25	2,5"	35
PF-30	3"	40

Double Plastic Disc Filters



Product Code	Inlet/Outlet (inch)	Flowrate (m <sup>3</sup> /h) max
PFK-30	3"	45
PFD-30	3"	55
PFK-40	4"	65
PFD-40	4"	75

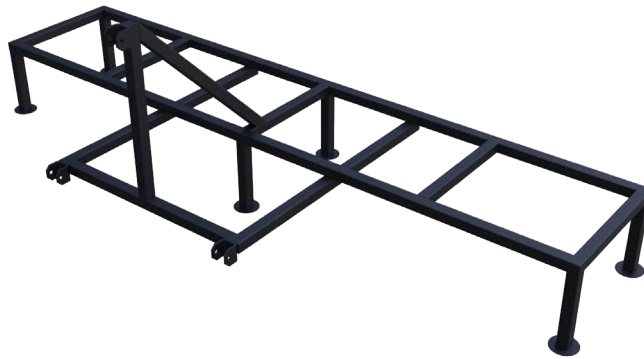


## Trailers



Product Code	Product Description	Capacity
RM-01	Double Axle Scissor Trailer	5000 Kg
RM-02	Single Axle Scissor Trailer	2700 Kg
RM-03	Scissorless Zero Wheel Trailer	450 Kg

## Hydraulic Lift-Stand



Product Code	Product Description	Capacity
HK-01	Hydraulic Lift-Stand	0-350 Kg
HK-02	Hydraulic Lift-Stand	0-550 Kg





### Back Flushing Automatic Units



Product Code	Number of Stations
OTP-2	2 Stations
OTP-3	3 Stations
OTP-4	4 Stations
OTP-5	5 Stations
OTP-6	6 Stations
OTP-7	7 Stations
OTP-8	8 Stations
OTP-9	9 Stations
OTP-10	10 Stations

### Victaulic Clamp (Metal)



Product Code	Dimensions
VK-003	3"
VK-004	4"
VK-005	5"
VK-006	6"

### Manometers



Product Code	Description
MNT-1	0-6 Bar bottom outlet Q63 Dry Manometer
MNT-2	0.10 Bar bottom outlet Q63 Manometer with Glycerin
MNT-3	0.10 Bar back outlet Q63 Manometer with Glycerin

# Filter Systems

*That Increase Efficiency*



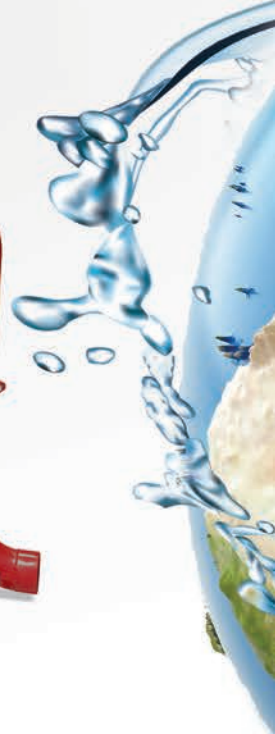


*Clean Water*  
*Clean Future*





clean water  
clean future



**AF**  
**AsiaFilt**  
Sulama ve Filtre Sistemleri



+90 332 503 32 42 +90 532 369 83 92

export@asiafilt.com.tr

www.asiafilt.com.tr /asiafilt.com.tr /asiafilt

Fevziçakmak Mah. Sila Cad. No:49D Karatay/KONYA